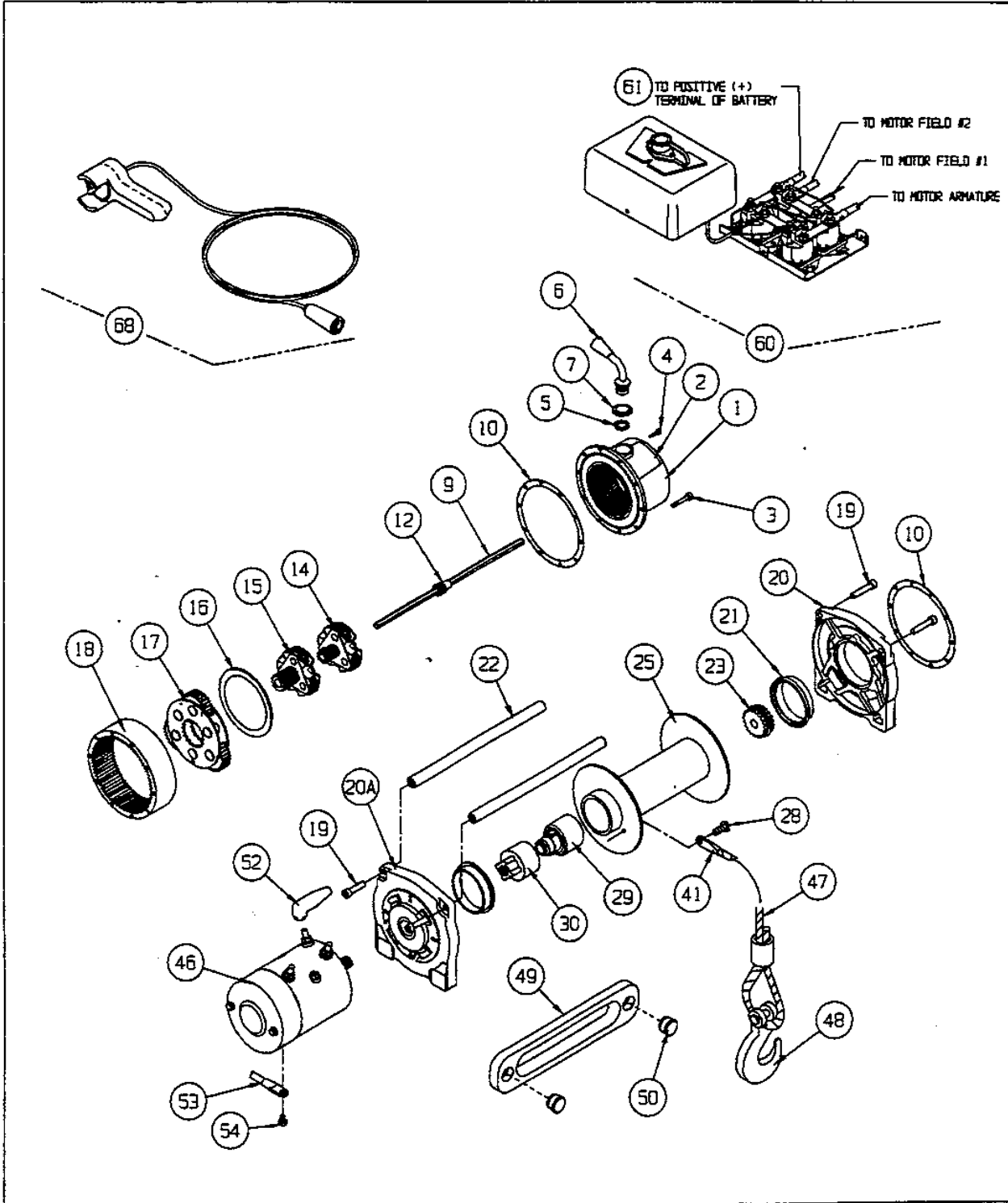


# M8000

SERIAL NO. 348580 UP TO 623335



WARN M8000 WINCH REPLACEMENT PARTS LIST			
SERIAL NOS. 348580 UP TO 623335			
ORDERING INFORMATION: When ordering please give Warn Model, Serial Number & Battery voltage. Part may be obtained through your local dealer or distributor.			
ITEM	QTY	PART NO	DESCRIPTION
1	1	37131	END HOUSING (INCLUDES #7)
2	1	26690	DECAL
3	10	13850	SOCKET HEAD CAPSCREW, 10-24 x 2-1/4"
4	1		DETENT SCREW
5	1		O-RING SEAL
6	1		RETAINER
7	1	21012	CLUTCH LEVER (includes items 4, 5&6)
9	1	27372	HEX SHAFT, 10.10"
10	2	13848	GASKET
12	1	13874	SUN GEAR, 12T
14	1	28430	CARRIER ASSEMBLY, STAGE 1
15	1	28431	CARRIER ASSEMBLY, STAGE 2
16	1	13826	THRUST BEARING
17	1	28432	CARRIER ASSEMBLY, STAGE 3
18	1	25308	RING GEAR
19	4	28683	FLANGE HEAD, CAPSCREW 5/16-18 x 1-1/4
20	1	25986	DRUM SUPPORT, GEAR TRAIN
20A	1	25985	DRUM SUPPORT, MOTOR
21	2	13831	DRUM BUSHING
22	2	32408	TIE ROD
23	1	14584	DRIVE SPLINED
25	1	26107	DRUM ASSEMBLY
28	1	13699	BUTTON HEAD CAPSCREW, 1/4-20 x 1/4"
29	1	32455	BRAKE ASSEMBLY
30	1	26006	MOTOR COUPLER
41	1	16463	WIRE ROPE TERMINAL KIT
46	1	25982	MOTOR, 12V
47	1	15276	WIRE ROPE ASSEMBLY, 5/16 x 80' (Includes item: 41)
48	1	5320	CLEVIS HOOK, 3/8" SLIP

WARN M8000 WINCH REPLACEMENT PARTS LIST			
ORDERING INFORMATION: When ordering please give Warn Model, Serial Number & Battery voltage. Part may be obtained through your local dealer or distributor.			
ITEM	QTY	PART NO	DESCRIPTION
49	1	7608	FAIRLEAD, HAWSE
50	2	32412	PLUG, PLASTIC
52	3	2090	BOOT, ELECTRICAL TERMINAL
53	1	15901	CABLE ASSEMBLY, ELECTRIC, 2 GA x 72" (BLACK)
54	1	26744	HEX HEAD CAPSCREW, M8 x 1.25 x 12mm
60	1	38842	WINCH CONTROL, 12 VDC
61	1	33295	CABLE ASSEMBLY, ELECTRIC 2 GA x 72" (RED)
66	4	28396	SOLENOID UPRIGHT
68	1	38626	REMOTE CONTROL ASSEMBLY
<b>P/N 31907 REV D0</b>			